

Enclosure Systems Ltd

www.enclosuresystems.com sales@enclosures.co.uk Tel: 01732 886552

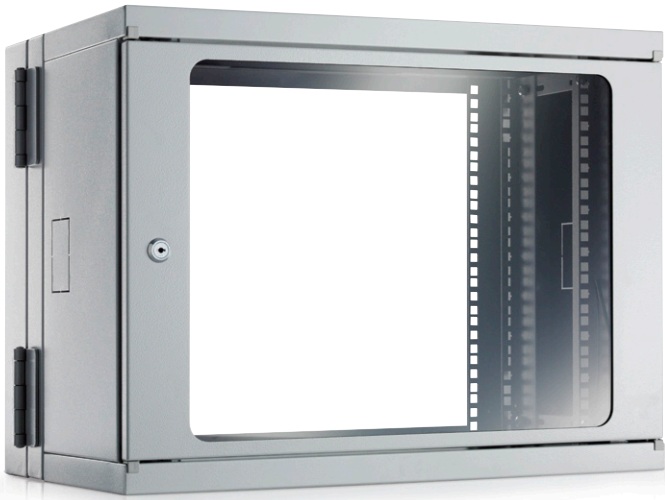


image shown with optional rear section

401 Series 19" Home Install Cabinet

Features:

- Fully welded construction for strength & rigidity
- Lockable steel framed acrylic door for safety & security
- 4U, 6U, 9U, 12U, 15U heights available
- Front mounting profiles (adjustable depth)
- 225mm depth single section cabinet
- Cable entry top & base also side panel 'knock outs'

The 401 Series has been specially designed to provide a high quality cost effective solution for small office or home installations.

The 401 Series is a strong and robust cabinet, fully welded construction, with a steel framed acrylic door, for safety and security. The door has a quick release hinge to allow easy access

to load equipment and cables.

The 401 Series has cable entry access via top and bottom with gland plates covers, and adjustable mounting angles. The side panels include cable entry 'knockouts' for easy cable routing.

Optional Upgrade:

The low profile 225mm depth can be upgraded to a double section cabinet by ordering the 130mm hinged rear section, which increases the depth to 355mm; this also allows access to the rear of installed equipment.

401 Cabinets

Height	Depth (mm)	Part Number	Rear Section Depth (mm)	Part Number	Overall Height (mm)
		604mm wide			
4U	225	4012204/G	130	tba	240
6U	225	4012206/G	130	tba	330
9U	225	4012209/G	130	4065109/G	463
12U	225	4012212/G	130	4065112/G	596
15U	225	4012215/G	130	4065115/G	730

Colour Specification

Epoxy powder paint Light Grey RAL7035.



Enclosure Systems Ltd

Platt Industrial Estate, Maidstone Road, Borough Green, Kent TN15 8JA

www.enclosuresystems.com

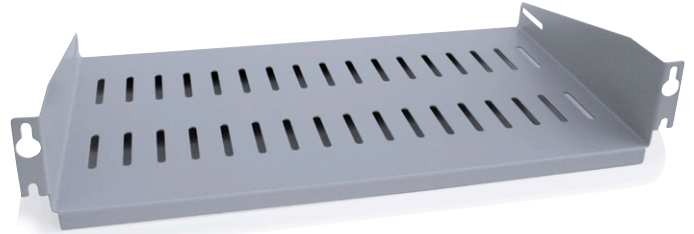


Enclosure Systems Ltd

www.enclosuresystems.com sales@enclosures.co.uk Tel: 01732 886552

Wall Cabinet Accessories Shelves

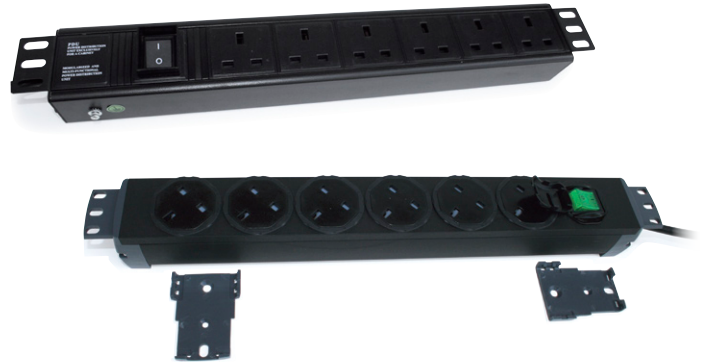
Cantilever (modem) 19" front mounting shelf, universal fitting to 19" profiles, rear fixing option available to be used as an additional support if required, available in Light Grey RAL 7035 or Jet Black RAL 9005.



Height	Depth (mm)	Part Number
1U	190	9823119/G-CW

Universal Power Distribution Units

6 way horizontal power distribution units, 3 pin UK 13amp sockets, switched, universal front fixing to 19" profiles. Eaton 6 way horizontal power distribution units, 13amp sockets, switched, universal front fixing to 19" profiles or rear fixing via Vari-clip mounting bracket.



No. of Sockets	Part Number
6 way	7880566-T
6 way	7880560

19" Hinged Wall Brackets

Cost effective 19" wall mounting solution, ideal for small office or home installation, available in 2U, 3U, 4U, 5U and 6U heights.

Hinged frame allows rear access to panels, width 500mm depth 150mm.



Height	Depth (mm)	Part Number
2U	150	6450162
3U	250	6450163
4U	150	6450164
5U	250	6450165
6U	150	6450166

ESL has a policy of continuous improvement and reserves the right to change the design or specification of any product.



Enclosure Systems Ltd
Platt Industrial Estate, Maidstone Road, Borough Green, Kent TN15 8JA

www.enclosuresystems.com

